

Panasonic
ideas for life

Authentication Camera
BM-DT120



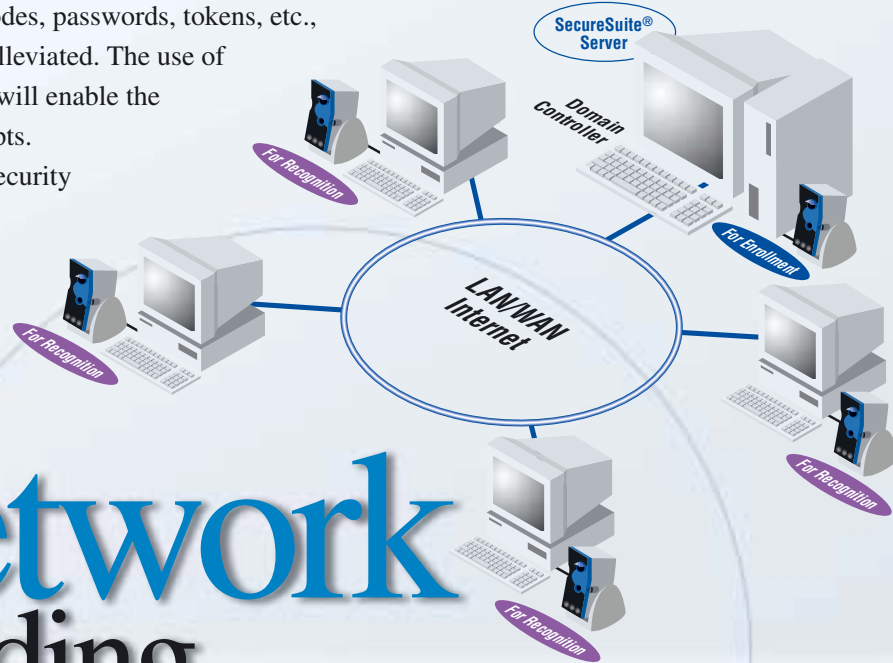
Your iris is a unique key in the world.



The BM-DT120, is a compact PC camera featuring cutting-edge Iris Recognition technology.

The Panasonic BM-DT120 is an Authentication camera for PC, which identifies a person and prevents illegal access. Operations are quite simple, yet meet the strict requirements for high security. The difficult management of conventional security codes, passwords, tokens, etc., as well as their operating costs, can be significantly alleviated. The use of BM-DS120 Server Software (available as an option) will enable the construction of a network through domain logon scripts. The BM-DT120 plays an active role in information security for all sorts of businesses to private PC management.

Network Building



To be managed with the BM-DS120 Server Software (option)

Using the domain controller on which the BM-DS120 is installed, you can build a SecureSuite® network, thus ensuring logon for each domain through the iris recognition system. Batch security control of resources on the network, such as files and application software, can be executed.

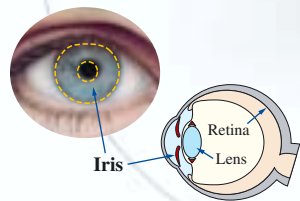
Maximum enrollment: 505 individuals

The use of optional user license software, BM-DU12025 (for 25 licenses), BM-DU12100 (for 100 licenses), and BM-DU12250 (for 250 licenses), will enable one to increase the enrollments according to the number of users. Iris enrollment for up to 505 individuals is possible.

High Accuracy

False Acceptance Ratio of 1 out of 1.2 Million*

The iris is the thin, plate-shaped membrane of the eyeball, which has very complex patterns. Iris Recognition identifies each individual by utilizing these patterns which differ from person to person. It offers outstanding accuracy over other less accurate biometric identification methods, such as fingerprints, voice, and facial recognition.



Iris Characteristics

- An extremely complex pattern that differs between the right and left eyes and even between identical twins.
- Patterns are formed six months after birth and stabilize at two years of age and then remain unchanged for life.
- Imitation is nearly impossible.

**"RECOGNIZING PERSONS BY THEIR IRIS PATTERNS" by John Daugman, University of Cambridge.

- Secure Folder**
(Encryption of files/folders)
- Secure Launch**
(Restriction on the use of application software)
- Secure Logon**
(Restriction of logons)
- Secure Session for Internet Explorer**
(Storage of Web site recognition information)
- Secure Session for Applications**
(Storage of recognition information concerning applications)



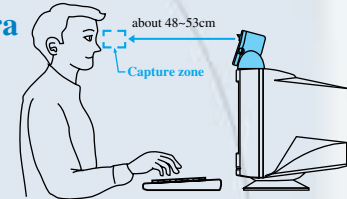
Simple Operation

Achieve recognition just by glancing at the camera

Simply glance at the camera lens from approximately 50 cm away, and in less than 2 seconds, the iris image is captured and authentication is completed.

Eyeglasses and contact lenses are easily accommodated.*

(*Capturing may be incomplete depending on the circumstances. We recommend that the initial iris image capture be done with the naked eye.)



Connection with a USB cable

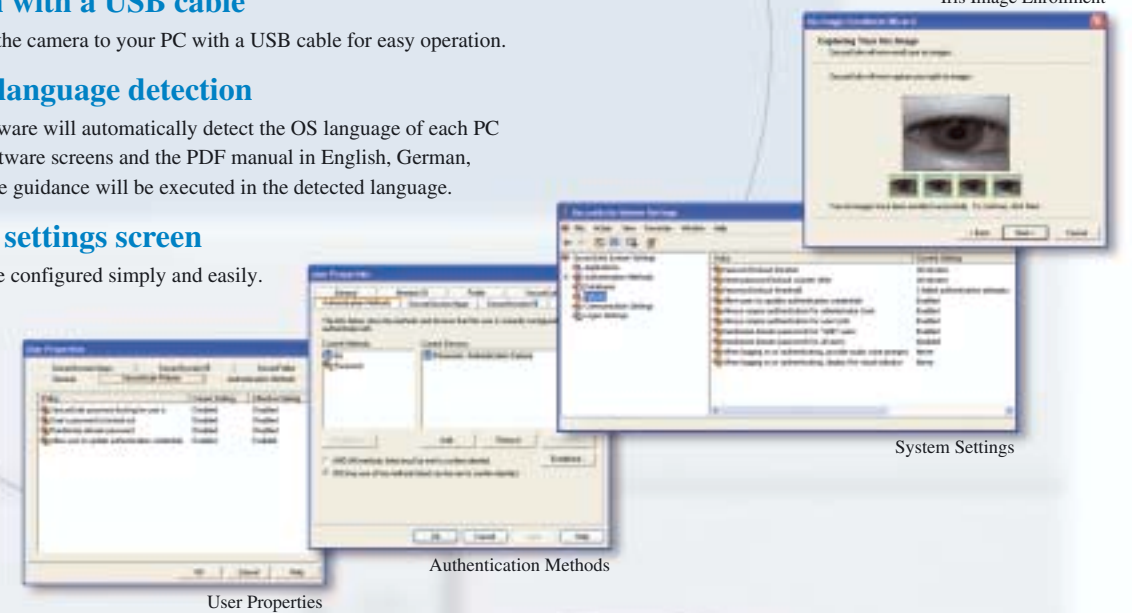
You can connect the camera to your PC with a USB cable for easy operation.

Automatic language detection

The included software will automatically detect the OS language of each PC and install the software screens and the PDF manual in English, German, or Japanese. Voice guidance will be executed in the detected language.

GUI-based settings screen

All settings can be configured simply and easily.




Incorporated colour camera for video conferencing!

The BM-DT120 incorporates a camera for video conferencing, in addition to the iris camera. LAN/WAN, videoconferences on the Internet, and video e-mail can be easily accomplished. The BM-DT120 will play an active role in making your business more efficient and help you enjoy visual communication with family members and friends.



Authentication Camera
BM-DT120

PRODUCT CONFIGURATION

Authentication Camera BM-DT120	Server Software BM-DS120
	User License Software BM-DU12025 (for 25 Licenses) BM-DU12100 (for 100 Licenses) BM-DU12250 (for 250 Licenses)

SYSTEM REQUIREMENTS

CPU	Pentium® 3 450 MHz or higher
RAM	256 MB or more
HARD DISK SPACE	40 MB or more
OS	Windows® 2000 Professional SP2 Windows® XP Professional

BUNDLED SOFTWARE

- Private ID™ driver software (Iridian Technologies®)
- SecureSuite™ application software (I/O Software®)

SPECIFICATIONS

Pick-up System	Image device: 1/4-type CCD Pixels (approx.): Effective: 307,200 (640 H x 480 V)
Sensitivity	Recommended Illumination: 40 lux to 10,000 lux
PC Interface	Standard: Universal Serial Bus (USB)
Lens*	Focus Manual 100 mm to infinity View Angle: Horizontal: 51° Vertical: 38°
Power Required	Voltage: DC 5 V (USB) Current: 0.3 A
Cable and Connectors	Connector: Universal Serial Bus (USB 1.1) Cable Harness Length (approx.): 1.8 m
Ambient Operating Temperature	+5°C ~ +35°C
Ambient Operating Humidity	20% ~ 80%
Weight (approx.)	160 g
Dimensions	42 (W) x 90 (H) x 74 (D) mm

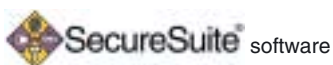
*Videoconference Camera

VIDEOCONFERENCING CHANNEL

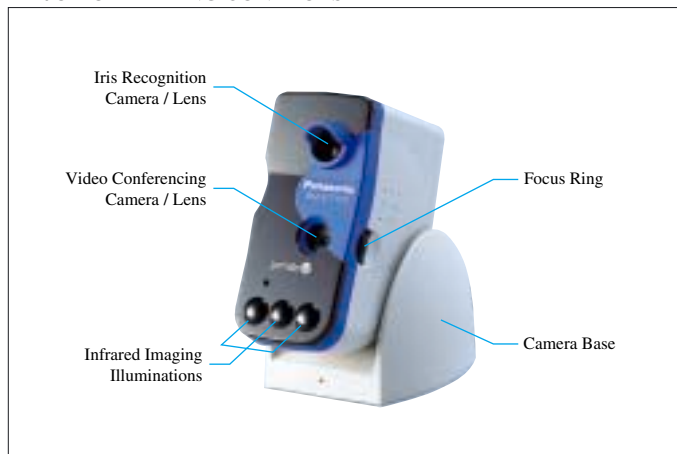
Image Sensor	Progressive scan CCD with VGA resolution
Recommended Illumination	40 lux at f2:0 for optimum performance in videoconference mode
White Balance	ATW Automatic or Manual control (selectable)
Privacy Shutter	Yes
Frame Rates	VGA (640 x 480): 12.5 fps QVGA (320 x 240): 30 fps CIF (352 x 288): 30 fps QCIF (176 x 144): 30 fps

TRADEMARKS

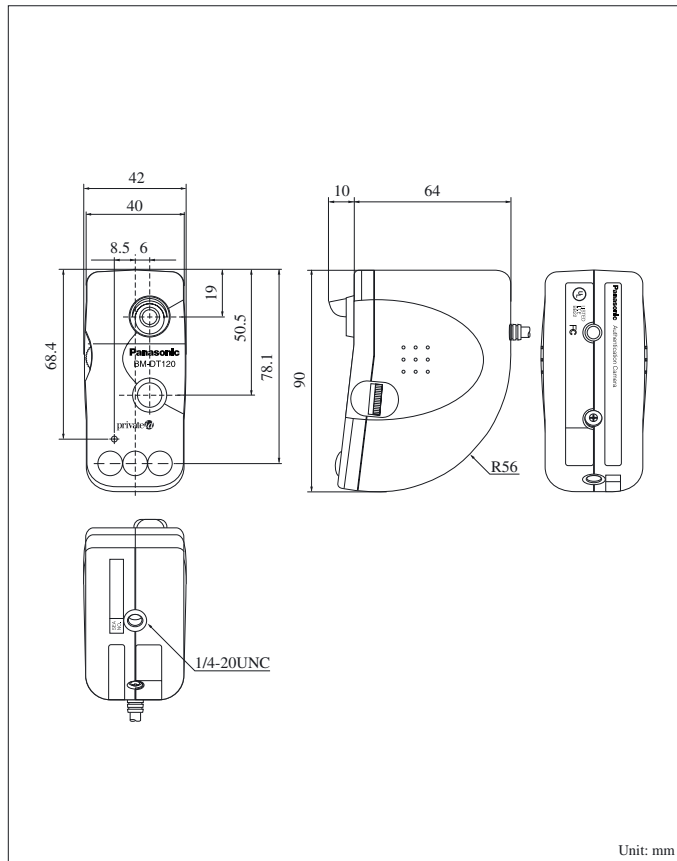
- Iridian Technologies, the Iridian Technologies logo, the "id" ball, and Private ID are all trademarks of Iridian Technologies, Inc. IrisCode is a registered trademark of Iridian Technologies.
- SecureSuite is a trademark of I/O Software, Inc.
- Microsoft® Windows® is a registered trademark of Microsoft Corporation in the United States and / or other countries.
- Intel and Pentium are trademarks of Intel Corporation.
- All other product names are trademarks or registered trademarks of their respective trademark holders.



MAJOR OPERATING CONTROLS



APPEARANCE



Unit: mm

• All photographs and menu are simulated and shown for the purpose of explanation.

• Weights and dimensions are approximate. • Specifications are subject to change without notice. • This product is subject to export control regulations.

DISTRIBUTED BY:

Panasonic System Solutions Company
Matsushita Electric Industrial Co., Ltd.
 4-3-1, Tsunashima-higashi, Kohoku-ku, Yokohama,
 223-8639, Japan
 Tel 81(0)45-540-5769
 Fax 81(0)45-540-5773
 URL <http://panasonic.co.jp/pss/cctv/en/index.html>

Panasonic
 Panasonic is the brandname of Matsushita Electric.
 Printed in Japan BM-JKDT120C(2N-724)